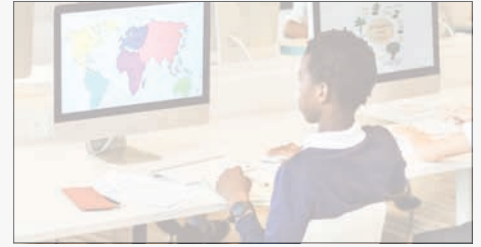


ALPS SUMMER NEWSLETTER 2017 - ENGLAND



Alps Connect

From Autumn 2017 you will be able to access your Alps analysis online via Alps Connect. Connect allows you to:

- Build your own custom Alps reports or use the pre-defined reports – and share these with colleagues
- Carry out 'what-if' analysis to instantly see how many grades need to change in each subject to move up (or slip down) the Alps thermometer
- View performance by groups of students and compare performance between student groups – such as by gender, ethnicity or disadvantage
- Upload both your end-of-year results and in-year monitoring grades, and combine both types of data in the same report

In the first year we are offering a discount on Alps Connect to all schools and colleges. Full access to Alps Connect will cost **£700** (£600 via PiXL Save) plus the cost of your Alps Provider Report. We are also offering an additional **10% discount** if you complete our online expression of interest form before the end of July.

To see Connect and to express your interest please visit www.alps.education/connect

Summer 2017 Conferences

Our half-day conferences give you a chance to learn more about Alps in advance of this summer's results period. This is an ideal opportunity for colleagues who already use Alps to refresh their knowledge, or for Alps newcomers to learn more about our system before ordering their first reports in August. **See more details about each conference and book online at www.alps-va.co.uk/conf**

Maximising Student Progress in a Linear World

A key theme of this day is how Alps can be used for tracking and monitoring in a linear landscape. Through a mix of presentations, workshops and school case studies, you will learn how Alps provides consistent benchmarks against which you can measure your students' in-year progress.

Date: Wednesday 5th July 2017

Time: 9:40 – 12:55

Venue: CCT Venues, Barbican, London EC14 4JA

Maximising Student Progress at KS4

This conference demonstrates how Alps can be used in your school to support outstanding student progress at KS4. We will feature interactive workshops, presentations and a case study from a high performing school.

Date: Thursday 6th July 2017

Time: 9:40 – 12:55

Venue: Woburn House, London WC1H 9HQ

This conference is free of charge for schools & colleges covered by LA or MAT projects



IS 621807

KS4 & KS5 Performance Systems



The Student Centred Approach

Alps for Key Stage 4

Hundreds of schools received KS4 Alps reports for the first time in 2016. The feedback we received was outstanding. Teachers were impressed by the depth of the analysis, the clarity of the indicators and the timeliness of the report. Alps reports requested on Results Day can be in school at the start of term in September.

As well as timeliness, our KS4 report also offers:

- A simple grading & colour coding system
- Aspirational target setting
- Teaching set analysis
- Gender analysis
- Ethnicity analysis
- 4-year trend analysis
- Gap Dashboards

Our updated Key Stage 4 report will be available from August. It includes new benchmarks (based on the latest data from The Department for Education) and our all new 'Gap Dashboard'.

We are offering a 20% discount on 2017 KS4 reports to schools who express their interest before the end of July 2017. We are also offering this discount to all PiXL schools.

Visit us online at www.alps-va.co.uk/ks4interest for more information



Report Prices

We have reviewed the costs of our reports and training and are pleased to confirm that we will not be increasing our prices for 2017/18.

KS5 Report Prices

From £500 to £895 (+VAT)

KS4 Report Prices

From £600 to £950 (+VAT)

Prices are dependent on student numbers. Full details of prices for all reports and training are available on our website:

www.alps-va.co.uk/prices

Report Printing 2017

From August 2017, we will only be sending you copies of your main Provider reports for A level, AS level, BTEC and Key Stage 4. All additional reports (Gender, Ethnicity and Teaching Sets) will be available via myAlps.

myAlps is an online platform giving schools and colleges immediate access to PDF copies of their reports. If you do not have a myAlps account an activation letter will automatically be sent with your main report.

You will also be able to access Alps Connect through myAlps, allowing you to view, filter and interact with your Alps data.



IS 621807

KS4 & KS5 Performance Systems



The Student Centred Approach