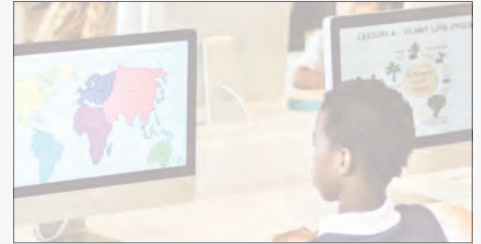


# ALPS SUMMER NEWSLETTER 2017 - WALES



## Alps Work in Wales

It has been a busy twelve months for Alps in Wales and we are grateful for the support and interest shared by colleagues from across the country. Every school in Wales and many of the colleges now use Alps as their post-16 improvement tool, creating a common language and opportunities throughout the country.

We have visited over 150 schools this year to do training and provide feedbacks to schools and colleges. In addition, we have led training sessions with improvement advisors, governors, headteachers and LA leaders, along with a national conference in Cardiff in March.

The welcome we have received from colleagues - from Anglesey in the north to the Vale of Glamorgan in the South - has been extraordinary.

In 2017/18, we will visit every single school with a sixth form in Wales in our role as critical friend.

## Meeting with Estyn

In May, we travelled to Cardiff to meet colleagues from Estyn. We hope that this meeting is the first of many with the Inspectorate, particularly given the importance that Estyn is now placing upon sixth form outcomes.

As you are aware, the National Assembly is planning to introduce a series of performance measures for post-16 providers, including a value added and progress measure. We are delighted with this news. It has the potential to raise the profile of sixth form outcomes still further.

It is clear to us that Alps should be used alongside any national performance measure, in the same way as it is currently used in England.

In April, we met colleagues responsible for the development of these new measures in Carmarthen, and agreed a series of positive steps forward together.

## Welsh Government

At the end of April colleagues from Alps travelled to Caerphilly and Carmarthen to meet with representatives from the Welsh Assembly who are developing the new suite of post-16 accountability measures. This was our second meeting and our aim was to keep each other informed of the progress we are both making, and to discuss ways of working together in the future. This was an excellent meeting with clear priorities established, further meetings agreed, and joint communications discussed.



IS 621807

KS4 & KS5 Performance Systems



The Student Centred Approach



# Alps Connect

From Autumn 2017 you will be able to access your Alps analysis online via Alps Connect. Connect allows you to:

- Build your own custom Alps reports or use the pre-defined reports – and share these with colleagues
- Carry out 'what-if' analysis to instantly see how many grades need to change in each subject to move up (or slip down) the Alps thermometer
- View performance by groups of students and compare performance between student groups – such as by gender, ethnicity or disadvantage
- Upload both your end-of-year results and in-year monitoring grades, and combine both types of data in the same report

In Wales, we have agreed that Alps Connect will be provided to all schools as a standard part of any project either with local authorities or the regional consortia. This means that there will be no additional cost for schools to use this exceptional improvement tool for their sixth form.

## KS4 Alps Reports for Wales

We are currently conducting a Key Stage 4 pilot involving 40 schools in Wales. These schools are due to receive a copy of our new Welsh KS4 report. We will then meet individually with each school to review their report. This is an opportunity for Alps to deliver training for the pilot schools, and for the schools to give us their feedback on our KS4 report.

Our Key Stage 4 report has the potential to be a transformational tool for schools in Wales. It includes:

- A simple grading & colour coding system
- Aspirational target setting
- Teaching set analysis
- Gender analysis
- Ethnicity analysis
- 4-year trend analysis
- Gap Dashboards

As at KS5, our KS4 report is supported by training delivered by our expert team of experienced Alps trainers.

We anticipate being able to offer our Key Stage 4 report in Wales in the autumn. Once the pilot is concluded we will contact schools in Wales to confirm this.



Alps Key Stage 4 - Subject value added overview

Best Example Report

2015/16 Key Stage 4 Report for KS4 13.05.16

Subject	2014/15	2015/16	2016/17	2017/18	2018/19	2019/20	2020/21	2021/22	2022/23	2023/24	2024/25	2025/26	2026/27	2027/28	2028/29	2029/30	2030/31
Maths	100	100	100	100	100	100	100	100	100	100	100	100	100	100	100	100	100
English	100	100	100	100	100	100	100	100	100	100	100	100	100	100	100	100	100
Science	100	100	100	100	100	100	100	100	100	100	100	100	100	100	100	100	100
History	100	100	100	100	100	100	100	100	100	100	100	100	100	100	100	100	100
Geography	100	100	100	100	100	100	100	100	100	100	100	100	100	100	100	100	100
Art	100	100	100	100	100	100	100	100	100	100	100	100	100	100	100	100	100
Music	100	100	100	100	100	100	100	100	100	100	100	100	100	100	100	100	100
Physical Education	100	100	100	100	100	100	100	100	100	100	100	100	100	100	100	100	100
Religious Studies	100	100	100	100	100	100	100	100	100	100	100	100	100	100	100	100	100
Personal Development	100	100	100	100	100	100	100	100	100	100	100	100	100	100	100	100	100
Health Education	100	100	100	100	100	100	100	100	100	100	100	100	100	100	100	100	100
PSHE	100	100	100	100	100	100	100	100	100	100	100	100	100	100	100	100	100
French	100	100	100	100	100	100	100	100	100	100	100	100	100	100	100	100	100
Spanish	100	100	100	100	100	100	100	100	100	100	100	100	100	100	100	100	100
Latin	100	100	100	100	100	100	100	100	100	100	100	100	100	100	100	100	100
Classical Civilisation	100	100	100	100	100	100	100	100	100	100	100	100	100	100	100	100	100
Design	100	100	100	100	100	100	100	100	100	100	100	100	100	100	100	100	100
Computing	100	100	100	100	100	100	100	100	100	100	100	100	100	100	100	100	100
Business	100	100	100	100	100	100	100	100	100	100	100	100	100	100	100	100	100
Physical Education	100	100	100	100	100	100	100	100	100	100	100	100	100	100	100	100	100
Religious Studies	100	100	100	100	100	100	100	100	100	100	100	100	100	100	100	100	100
Personal Development	100	100	100	100	100	100	100	100	100	100	100	100	100	100	100	100	100
Health Education	100	100	100	100	100	100	100	100	100	100	100	100	100	100	100	100	100
PSHE	100	100	100	100	100	100	100	100	100	100	100	100	100	100	100	100	100
French	100	100	100	100	100	100	100	100	100	100	100	100	100	100	100	100	100
Spanish	100	100	100	100	100	100	100	100	100	100	100	100	100	100	100	100	100
Latin	100	100	100	100	100	100	100	100	100	100	100	100	100	100	100	100	100
Classical Civilisation	100	100	100	100	100	100	100	100	100	100	100	100	100	100	100	100	100
Design	100	100	100	100	100	100	100	100	100	100	100	100	100	100	100	100	100
Computing	100	100	100	100	100	100	100	100	100	100	100	100	100	100	100	100	100
Business	100	100	100	100	100	100	100	100	100	100	100	100	100	100	100	100	100



IS 621807

KS4 & KS5 Performance Systems



The Student Centred Approach